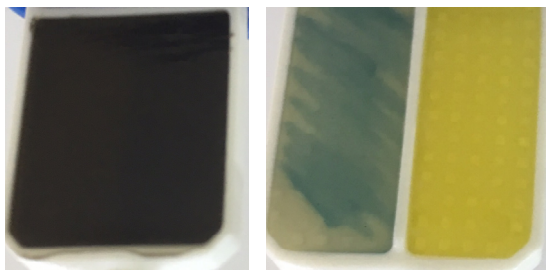
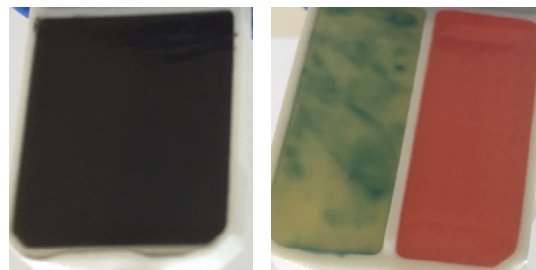


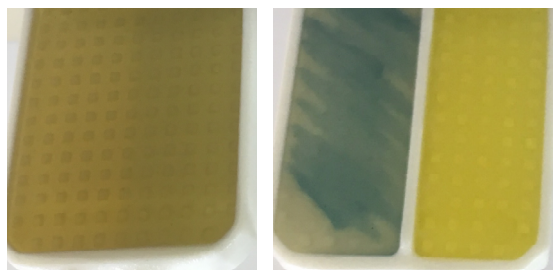
LACTOBAC DIFERENCIAL INTERPRETAÇÃO DE RESULTADOS



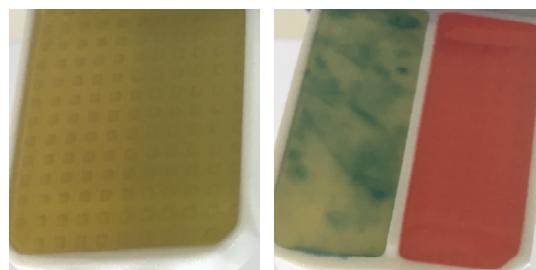
Enterococcus spp



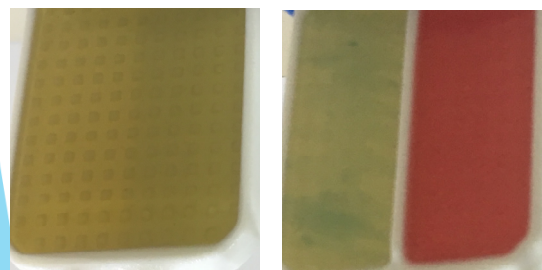
Listeria spp
(Catalase + / liberação gás)



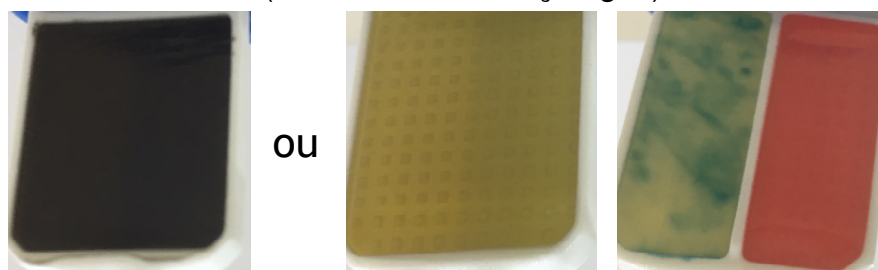
Streptococcus uberis



Bacillus spp
(Catalase + / liberação gás)



Streptococcus agalactiae



ou

Lactococos
(Catalase - / ausência gás)